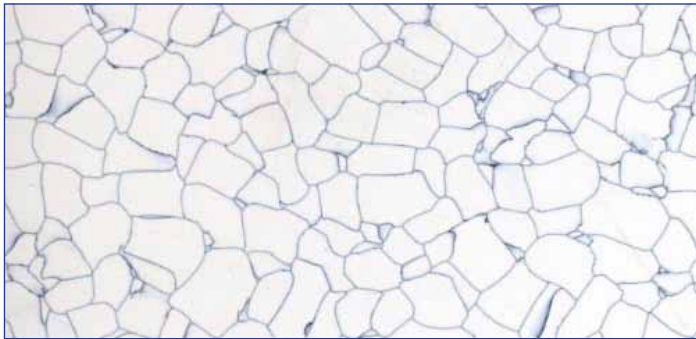




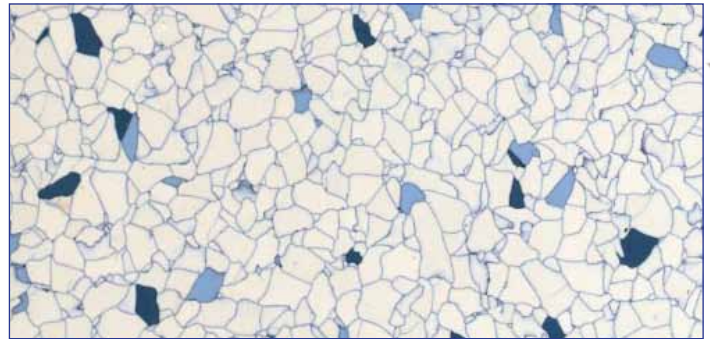
Foundation Series – Premium ESD Vinyl Tile Flooring Systems

The Foundation Series offers permanent static control performance at the lowest total cost of ownership of any ESD flooring option available today. Encased conductive elements distributed throughout the tile ensure redundant conductive pathways. Staticworx warrants Foundation Series tile will meet or exceed the recommended electrical properties of ANSI/ESD S-20.20 for the life of the tile.*

Quick-Ship Colors No minimum

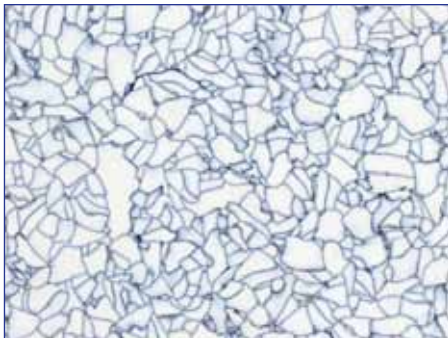


2403 Glacier 24"



2401 Arctic Ice 24"

Standard Colors



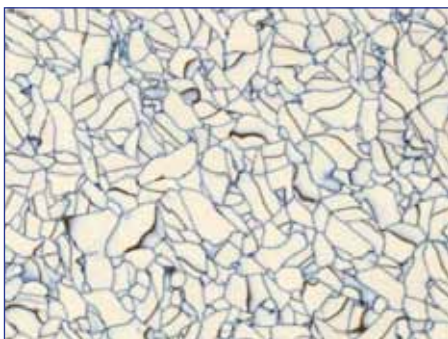
2405 Limestone 24"



2404 Granite 24"

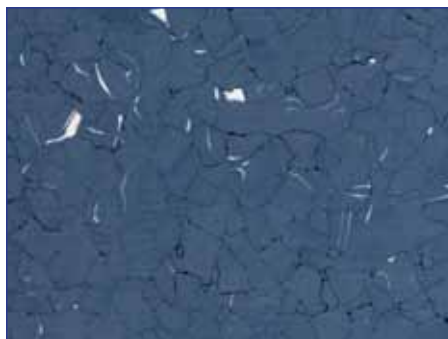


2406 Rainier 24"



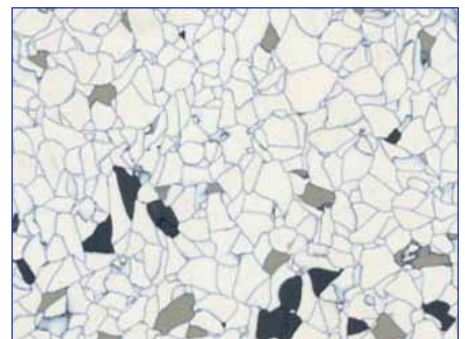
2402 Dune* 24"

*Special order only. Minimums apply.



2408 Bluestone* 24"

*Special order only. Minimums apply.



2407 Sea Salt 24"



24" Available in 24" x 24" x 3 mm thick

*Warranty requires that the tile system is installed using Staticworx approved materials and procedures.

Foundation Series

Premium ESD Vinyl Tile Flooring Systems

SPECIFICATIONS	Test Method	ASTM Spec	Foundation Series vinyl tile	
Electrical Resistance: – Surface to Surface – Surface to Ground	ESD S 7.1 (100V) NFPA 99 (500V) ASTM F 150 (500V) DIN 51953 (500V)	 $2.5 \times 10^4 \Omega$ (SD: $1 \times 10^6 - 10^9$) 2.5×10^4	Conductive $2.5 \times 10^4 - 10^6$ 2.5×10^4	Static Dissipative* $1 \times 10^6 - 10^8$
Electrostatic Propensity	ESD STM 97.2		Less than 20V	Less than 20V
Static Decay	Federal Test Method 101B Method 4046 at 15% Relative Humidity	< 0.5 sec	0.01 sec	0.01 sec
Material Composition	ASTM F 1700, Certificate of Compliance	Homogeneous		
Thickness	ASTM F 368, DIN EN 428	As specified ± 0.0005 in	3 mm standard size (2 mm thickness also available as special order item.)	
Nominal Sizes	ASTM F 536, DIN EN 427	± 0.016 in./lin. ft.	24" x 24" (12" x 12" and 36" x 36" sizes also available as special order items.)	
Squareness	ASTM F 540	Maximum 0.010 in	< 0.010"	
Residual Indentation	ASTM F 1914, DIN EN 433 max.	Average less than 8%, Single reading 10%	< 7%	
Feasibility	ASTM F 137	No crack or break	No crack or break	
Dimensional Stability	ASTM fed. Std. No. 501a, Method 6211, DIN EN 434	(0.51mm/304.8mm)	< 0.024"/ft. < 0.015"/ft.	
Resistance to Chemicals	ASTM F 925, DIN EN 423	No more than a slight change in surface dulling, surface attack or staining.	No more than a slight change in surface dulling, surface attack or staining.	
Thermal Resistance	DIN 52612		6.18×10^3	
Thermal Conductivity	DIN 52614		0.309 W/mK	
Static Load Limit	Modified ASTM F 970-00		2,500 psi	
Smoke Density	ASTM E 662	< 450	< 450	
Flame Spread	ASTM E 84, NFPA 225	< 75	< 75	
Fire Resistance	DIN 4102 ONORM B 3810		B1 B1 Q1	
Ceitical Radiant Flux	ASTM E 648, NFPA 253		CLASS 1 > 1.08W/cm ²	
Abrasion Resistance	ASTM D 1044, CS-10F wheel, 500Gm Weight		Cycle % 10,000	Gauge Loss 1.60
Resistance to Wear	DIN EN 660-1		M	
Effect of Castor Chair	DIN EN 425		No damage	
Color Fastness	ISO 105 B02		At least 6	
Sound Absorption	DIN 52210		Approximately 2dB	
Standard for Health Care Facilities	ASTM E 84, NFPA 225	< 75	< 75	
Fulfills Product Requirements	DIN EN 49		Yes	

*Please note: Static dissipative vinyl is a special order item. Static dissipative flooring does not adequately duplicate the grounding performance of wrist straps and may not meet all of the requirements of class zero handling or the recommended electrical parameters of ANSI/ESD S 20.20. For this reason, StaticWorx always recommends conductive vinyl tile for applications where a person may come in contact with static sensitive electronics. Please consult the StaticWorx technical department for supporting documentation regarding this important distinction.

Staticworx Foundation Series vinyl tile flooring systems provide superior ESD protection with an electrical resistance to ground within the ideal range for ESD Class Zero environments.

This ideal range regarding electrical resistance for ESD flooring systems is defined in ANSI/ESD S20.20-2007 for system resistance.

